

## INSTRUCTIONS FOR THE OVERLAY GLOBE

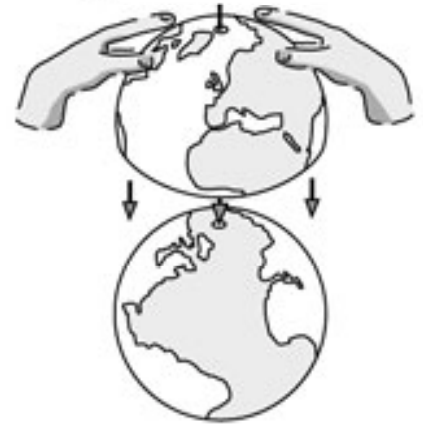
Congratulations! You have received a new concept in globe manufacturing...an overlay globe. Following are the instructions on how to use the overlays.



1. The overlays are placed over a globe half/round for protection. Keep the half/round. After you have used the overlays return them to the half/round for storage.



2. The blue polar caps are removable. Remove the north polar cap.



3. Place the northern hemisphere overlay over the northern hemisphere, aligning the punched hole in the overlay with the polar cap hole.



4. Gently smooth the overlay so that it is firm against the globe.



5. Put the north polar cap back into the globe. The northern hemisphere should now be firmly attached to the globe ball.



6. Remove the south polar cap.



7. Place the southern hemisphere overlay over the southern hemisphere. Make sure the northern and southern hemispheres are in register, by aligning the prime meridian.



8. Place the south polar cap back into the globe.



9. Keep the globe half/rounds. When you remove the overlays, place them back over the half/rounds for storage.